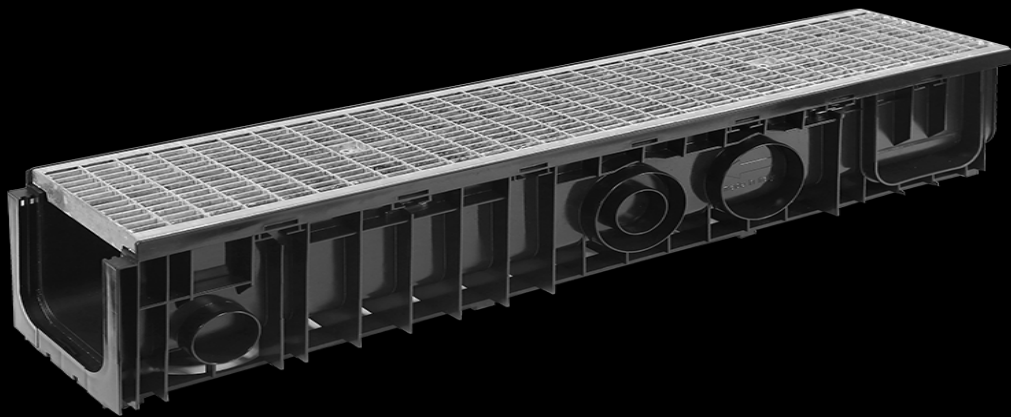
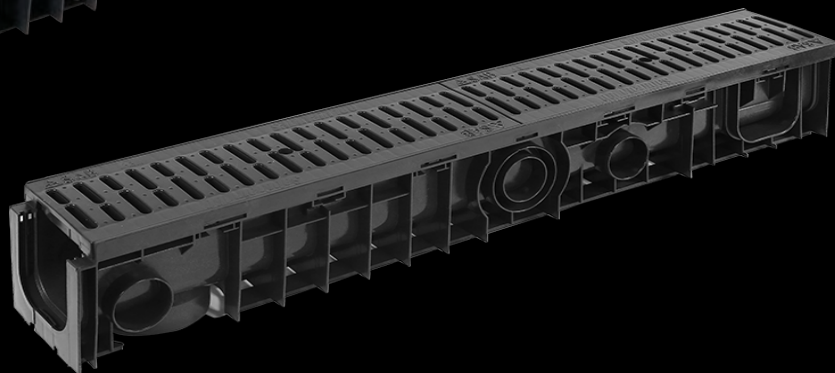
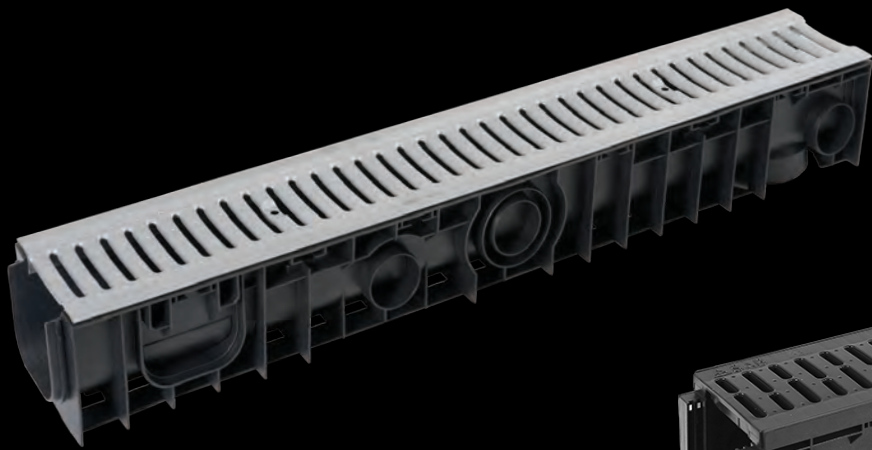
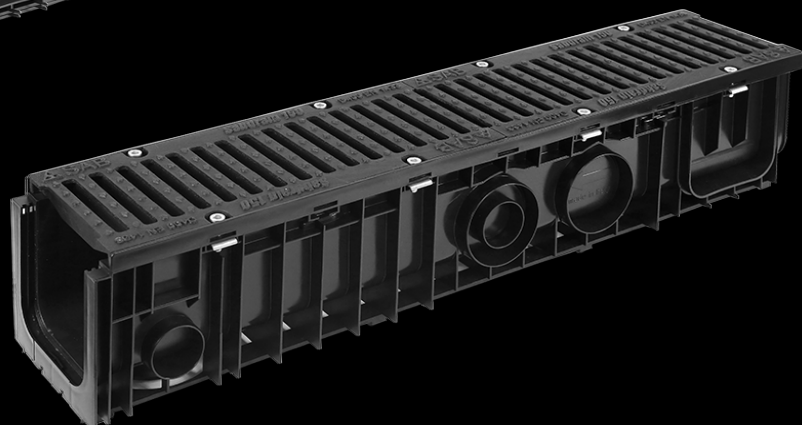


2018



**SAB***drain*  
water drainage systems



The details that make the difference.....

FROM ITALY.....

.....TO YOUR DOOR



ISO9001 - 2000  
Company Approvals



CE mark



Roads &  
Maritime

RMS Accepted

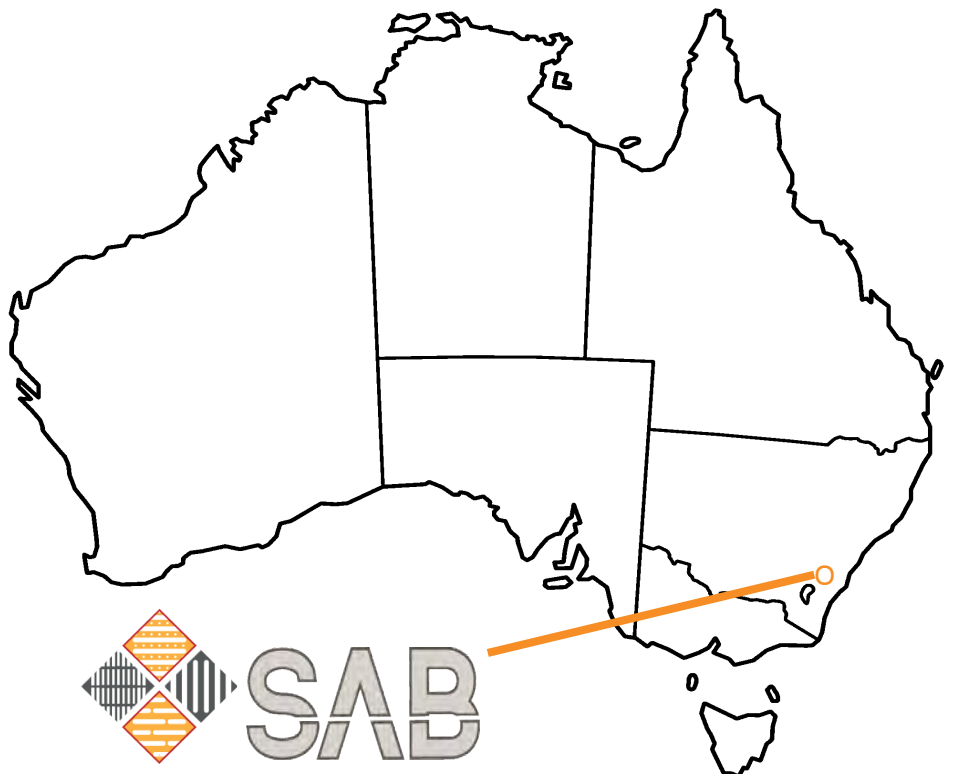


BUREAU  
VERITAS

Product Approval



Testing Lab



# Contents - 2017

<b>SABDRAIN - AN EVOLVING STORY</b>	<b>2</b>
<b>THE INSIDE STORY</b>	<b>3</b>
<b>SAB ADVANTAGE</b>	<b>4</b>
<b>LOAD CLASSIFACATION- GRATE CLASS</b>	<b>5</b>
<b>SAB - DETAILS THAT MAKE THE DIFFERENCE</b>	<b>6-7</b>
<b>SAB500 SERIES</b>	<b>8-10</b>
<b>SAB600 SERIES</b>	<b>11</b>
<b>SAB700 SERIES</b>	<b>12-17</b>
<b>SAB900 SERIES</b>	<b>18-19</b>
<b>SAB GRATES</b>	<b>20-21</b>
<b>SAB CHANNEL ACESSORIES</b>	<b>22-23</b>
<b>DRAIN BOX/ DIMENSION OF CHANNEL</b>	<b>23-24</b>
<b>SAB INSTALLATION &amp; ASSEMBLY OF CHANNELS</b>	<b>24-25</b>





Of all the innovations of mankind that have helped shaped the world the humble drainage channel would have to rate amongst the most revolutionary. Since the early Romans started forming stone channels in front of their homes to help with the control of water from off the streets, the same principles of water migration is still in existence today and has proven the test of time.

As with the early Romans the problems of rapid collection and evacuation of rainwater runoff is as real today as it was then. No one knows this better than SABdrain, who with this understanding have been able to incorporate performance, flexibility and functionality into their range of drainage channels. Located in the picturesque high valley town of Sant'Angelo in Vado (Italy) on the Metauro River, the history of this town stretches back to 1000 B.C (the late Bronze Age) making it older than Rome itself.

SABdrain, part of the SAB s.p.a. System Group of companies (inc. 1979), was founded in 2003 and is now one of Europe's leading developers in the engineering design of modular plastic technologies for surface water collection and migration throughout the world. With SABdrain's extensive knowledge and state-of-art manufacturing facilities, the Sabdrain surface drainage channel systems has proven to be able to provide a modern practical solution to the requirements of surface drainage.

In addition to being able to share in over 30 years experience in the development and manufacture of plastics, along with SABdrain's rigid controls for quality and attention to details they also carry industry certification for the following:-

ISO 9001/ UNI EN ISO 9001:2008

UNI EN 1433:2008

CE Declaration of Conformity

Regular testing during the manufacturing process ensures that you, the customer receive a product that will not only stand the test of time but will remain fully functional in serviceability not only for needs of today but for the future.





## THE INSIDE STORY



SABdrain, drainage channels has been developed to meet the ever challenging needs of surface water collection and migration. Made from Polypropylene (PP) Plastic, a state-of-art material known for its good mechanical, chemical and heat

resistance, along with robust, secure grating, the SABdrain Surface Drainage System is the ideal solution for areas that are not only subject to heavy vehicular movements, but also more demanding situations such as chemical plants, slaughterhouses, waste dumps etc.

The advanced modular design of the SABdrain channels facilitates rapid, easy assembly and installation, utilizing "Interlocking Joint Connections" that permit a rigid watertight fitting together of the units, preventing lateral and vertical displacement. The channels smooth rounded internal surface's assists in the self cleaning action of the drainage system by permitting the rapid dispersal of any accumulated deposits through the high flow of water.

Whether being used around the home or in high traffic areas, SABdrain's grating has been designed to meet the toughest of challenges in being able to drain quickly and reliably, offering maximum discharge capacity to the drainage system. Its unique 'Click - Clack' fixing for Residential and Class A Rated Grates offers rapid and reliable securing to the channel system, while still being able to be removed with ease for access the drainage system. Class B to G Rated Grates are equipped with security fixings for the securement of the drainage system from unauthorised access.

With the ever increasing requirements of hydraulic design for suitable surface drainage, SABdrain's Surface Drainage Systems is the professional's choice for a complete, long lasting and costeffective drainage solution to meet the demands of every situation.



# The SAB Advantage.....



## Anti-Slip

Anti-slip buttons giving the grate a slip resistance surface.



## Ease Of Assembly

The modular design of Sabdrain makes the assembly and installation of the drainage channels easy, thus saving time and money.



## Recyclable

Sabdrain products are made from 100% recyclable products that can be used again in the manufacturing process. Therefore protecting the environment for our future generations.



## Hydraulic Performance

The smooth rounded internal surfaces of the Sabdrain water drainage systems creates higher flows rates while allowing a self cleaning action thus avoiding the accumulation of silt deposits.



## Chemical Resistance

Due to Sabdrain's superior Polypropylene construction, it is able to resist most chemical agents, acids, salts, alkaline, fuels, oils, fats, etc.



## High Strength

The advanced construction of the Sabdrain drainage channel gives it greater structural rigidity, protecting it from damage during and after installation.



## Lightweight

Being manufactured from lightweight materials, Sabdrain has the added advantage of being easier to handle, transport, and install.











## Lockdown

2 point security lockdown for Anti-Theft peace of mind.

# LOAD CLASSIFICATION

European Standard EN1433:2008 /Australian Standard AS3996:2006

CLASS RATING		NOMINAL WHEEL LOADING (KG)	SERVICEABILITY DESIGN LOAD (KN)		ULTIMATE DESIGN LOAD (KN)		TYPICAL USES
			AS3966	EN1433	AS3966	EN1433	
	<b>RESIDENTIAL</b> Will withstand 1.5 Tonne Wheel	N/A	N/A	N/A	N/A	N/A	A non-rated drainage channel designed for use in residential applications such as pathways and driveways.  Will withstand 1.5 Tonne Wheel Loading
	<b>CLASS A</b> • Pedestrians • Cyclists	330	6.7	10	10	15	Precincts (including footways) accessible only to pedestrians & pedal cyclists, closed to any other traffic.
	<b>CLASS B</b> • Passenger vehicle • Light Commercial Vehicles	2670	53	83	80	125	Areas (including driveways & footpaths) accessible to passenger & light commercial vehicles.
	<b>CLASS C</b> • Slow Moving Vehicles • Heavy Commercial Vehicles	5000	100	167	150	250	Malls and areas open to slow moving and heavy commercial vehicles.
	<b>CLASS D</b> • Highways • Fast Moving Heavy Vehicles	8000	140	267	210	400	Carriageways & roads subject to fast moving heavy commercial vehicles.
	<b>CLASS E</b> • Heavy Wheeled Vehicles • Mining & Industrial Areas	13700	267	400	400	600	General docks and aircraft pavements
	<b>CLASS F</b> • High Wheeled Vehicles • Container Terminals, Docks etc	20000	400	600	600	900	Docks and aircraft pavements subjects to high wheel loads
	<b>CLASS G</b> • Heavy Loading Areas • Aircraft Pavements etc	30000	600	600	900	900	Docks and aircraft pavements subjects to very high wheel loads

# The details that make the difference.....

## Grate Fixings



### GRATE SECURITY FIXING

All SABdrain drainage channels are equipped with security grate locking devices (optional on SABdrain 507 and 351). This unique system keeps the grates rattle free from vehicular movements and secures the drainage system from unauthorised access. SABdrain 507 and 351 utilises a "Click-Clack" grate holding arrangement that allows ease of access while still being able to hold it firmly in place.

## 2 Degree Off-Set



### TWO DEGREE OFFSET

Each SABdrain channel's interlocking "Joint Connection System" is equipped with a 2° offset feature that allows the drainage system to be installed along curved applications, while still allowing the exact fitting and locking together of channels into place.

## Channel Connection



### CHANNEL JOINING SYSTEM

SABdrain drainage channels have been designed with "Interlocking Joint Connection Systems" that allows an exact fitting and locking together of the channel ends preventing any lateral and vertical displacement. Due to this unique joining system it allows the channels to be easily transported and assembled on site without the need of additional fittings.



## Pipe Connection



### PIPE OUTLET CONNECTIONS

Each SABdrain drainage channels are fitted with a series of preset pipe connections on the base and side of each unit, that allows for a simple cut – out and connection to the Stormwater System using standard PVC stormwater fittings.

## Channel Base



### CHANNEL BASE DESIGN

SABdrain drainage channels are designed with “Anti-Floatation Devices” consisting of longitudinal and vertical profiles that facilitate the flow of concrete around the channels base and sides, preventing it from floating as it is being placed.

## Lateral Channel Connection



### LATERAL CONNECTION SYSTEM

All SABdrain drainage channels are equipped with preset “Lateral Connections” to enable 90° joining of two channel units together. This feature allows the creation of right angle, tees and crosses without the need of any additional fittings.

## 351 PLASTIC GRATED CHANNEL

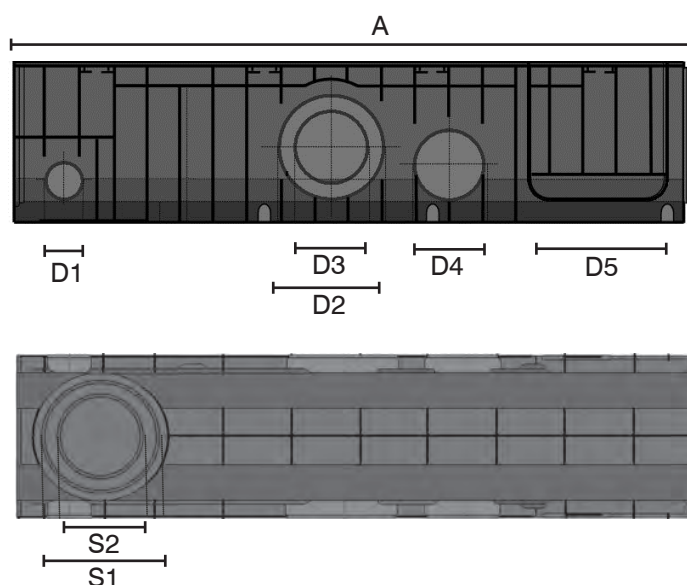
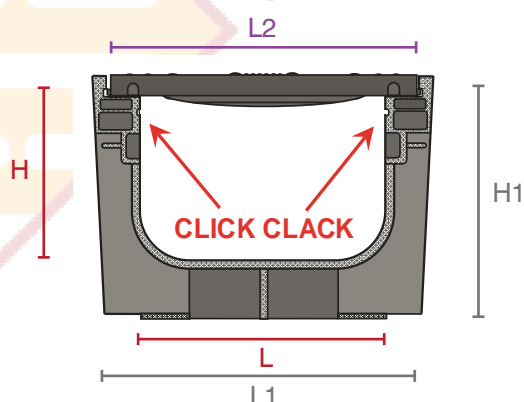
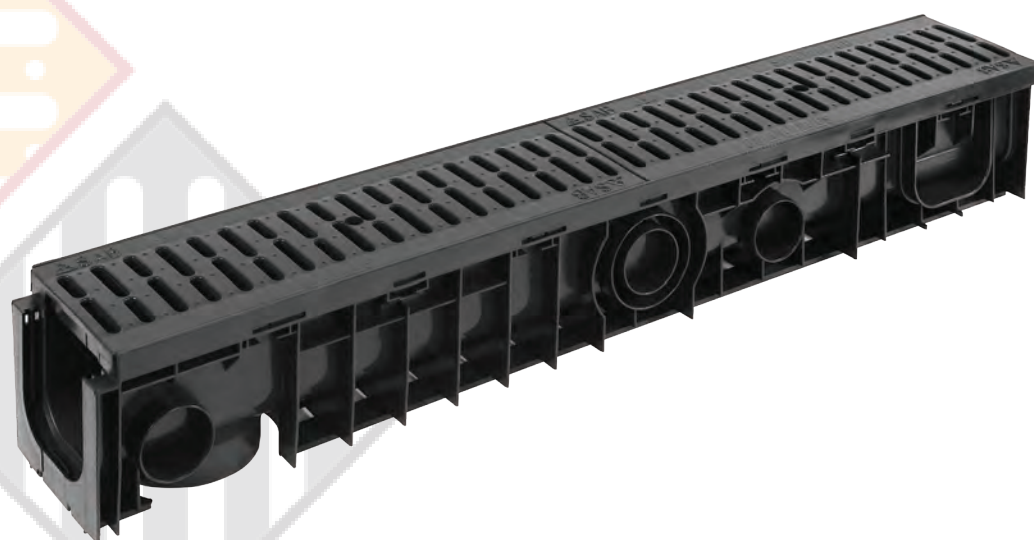
SABdrain 351 modular drainage channel offers an economical and versatile system for use in residential situations such as driveways, pathways etc. Its unique high strength design makes this channel ideal for every area around the house. The Polypropylene grate utilizes a Click-Clack fixing system as well as security fixing (optional) allowing quick and easy access, as well as secure fastening of the drainage system.



RESIDENTIAL



A10



### SABDRAIN 351

CODE	L	H	L1	H1	L2	Drain cm <sup>2</sup>	D1	D2	D3	D4	D5	S1	S2	A	Kg
DR351100100	100	100	150	150	145	171	63	90	63	63	100	110	63	1000	3.5
DR351100150	100	150	150	200	145	171	63	110	63	110	100	110	63	1000	4.0

## 507 METAL GRATED CHANNEL

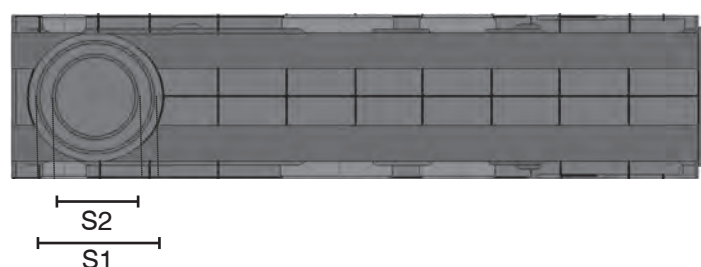
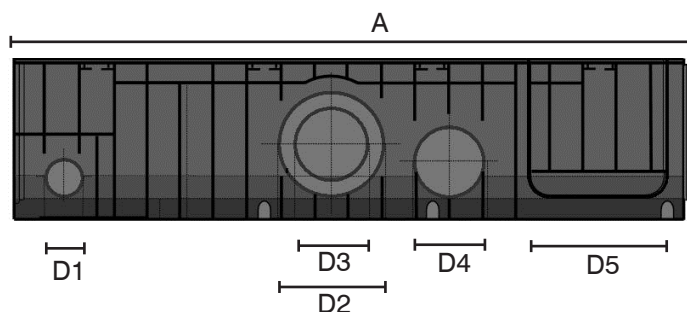
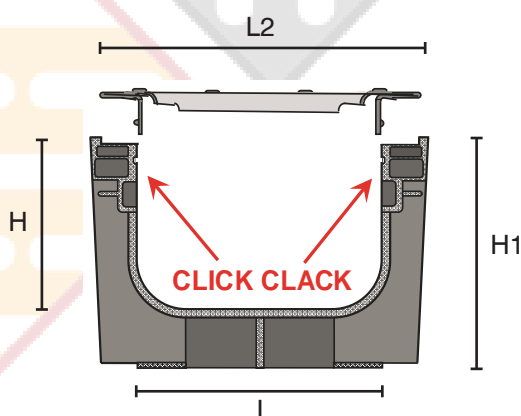
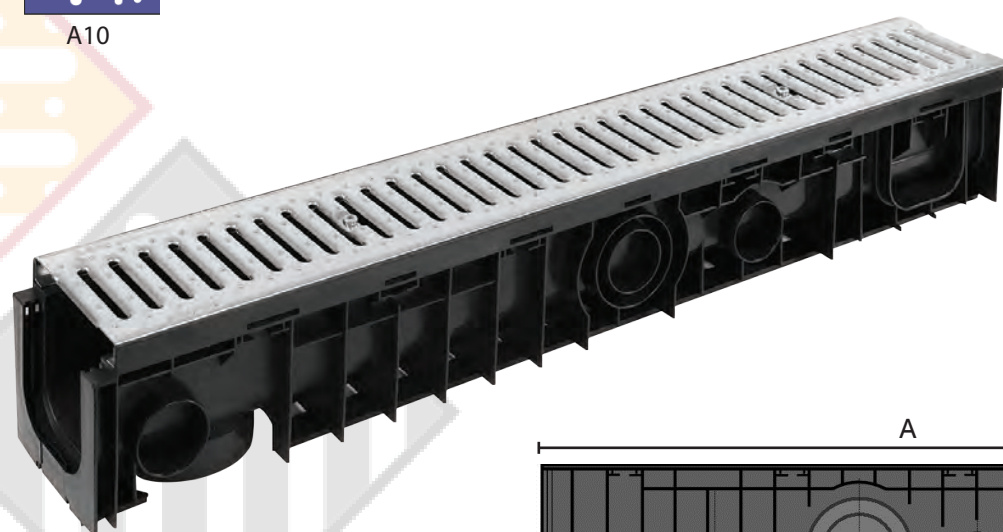
SABdrain 507 is a lightweight and easily installed drainage channel designed for use in pedestrian areas such as Plazas, Walkways, Malls etc, as well as residential driveway situations. Due to its unique high strength profile and edgeless design, this channel is ideally suited for paving and tiling applications. The slotted pressed metal grate utilizes a Click-Clack fixing system allowing quick and easy access to the drainage system. This distinctive pressed metal grate is available in both a galvanised and 304 stainless steel finishes.



RESIDENTIAL



A10



### SABDRAIN 507

CODE	L	H	L1	H1	L2	Drain cm <sup>2</sup>	D1	D2	D3	D4	D5	S1	S2	A	Kg
DR50710050	100	50	150	80	145	280	43	-	-	40	100	110	63	1000	3.3
DR507100100	100	100	150	130	145	280	63	90	63	90	100	110	63	1000	3.6
DR507100150	100	150	150	200	145	280	63	90	63	90	100	110	63	1000	5.4
DR507100100SS	100	100	150	130	145	280	63	90	63	90	100	110	63	1000	3.6



## 508 FLAT EDGE GRATED CHANNEL

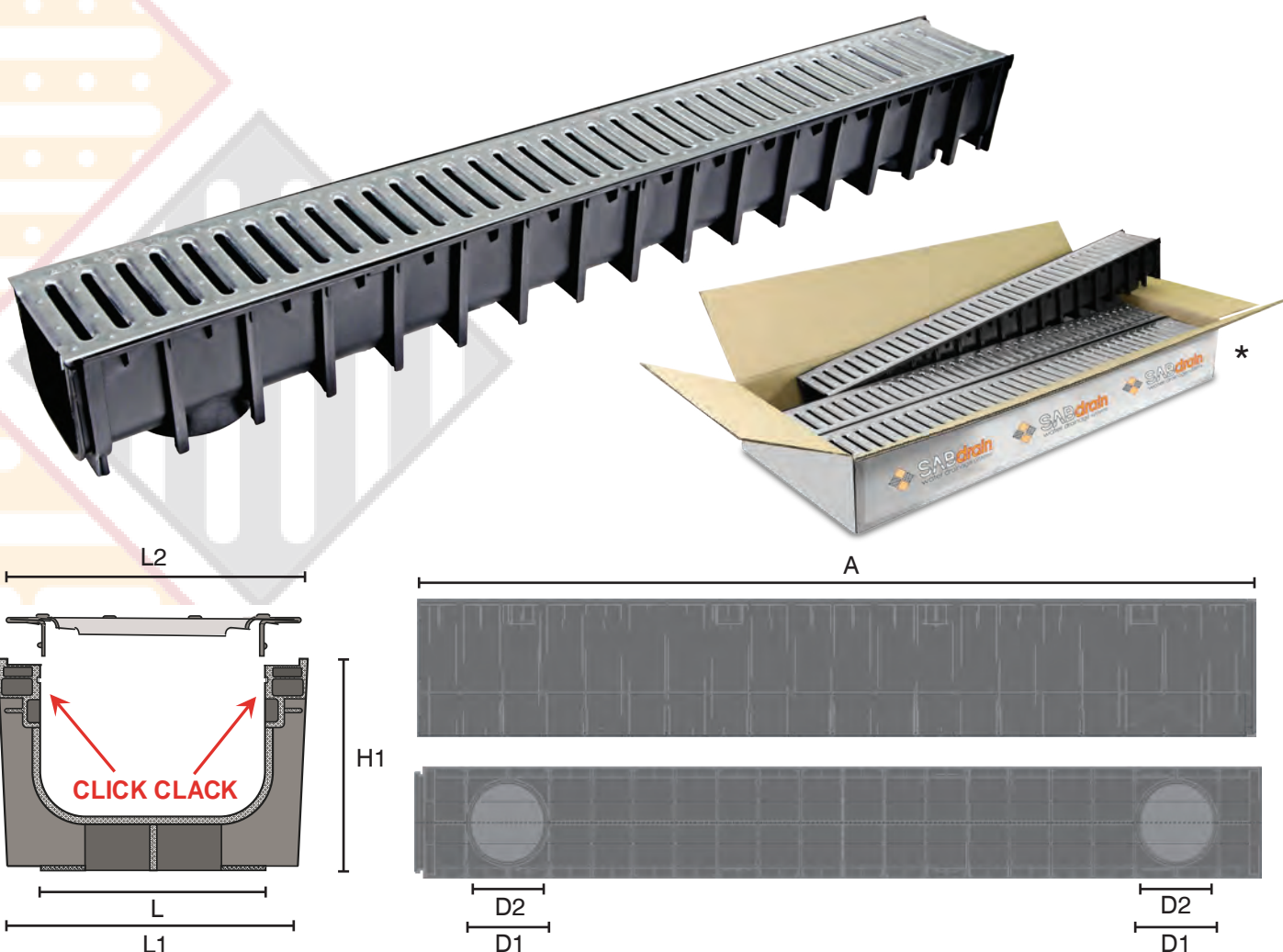
SABdrain 508 is a durable, lightweight and easily installed drainage channel developed for the DIY market, rated to withstand a 1.5 tonne wheel loading. This pressed metal grated channel, has a range of features to compliment it. Due to its edgeless design, this channel is ideal for paving and tiling applications. The galvanised slotted pressed metal grate utilizes a Click-Click fixing system allowing quick and easy access to the drainage system.



RESIDENTIAL



A10



Available in single or kit box\* (3 channels and 2 end caps)

### SABDRAIN 508

CODE	L	H	L1	H1	L2	Drain cm <sup>2</sup>	S1	S2	A	Kg
DR508100100	100	100	125	117	118	260	100	80	1000	2.2

## 601 GAL STEEL GRATED CHANNEL

SABdrain 601 combines the flexibility and durability of a Polypropylene drainage channel unit whilst still being able to satisfy the strength requirements for situations that require accessibility for passenger and light commercial vehicles. This rated channel and grate has been designed to offer maximum versatility while delivering a lifetime of low maintenance service. Each galvanised gate comes with a 2 point security fixing, to keep it rattle free from vehicular movements and secure it from unauthorised access. "Heel Guard" type grate.



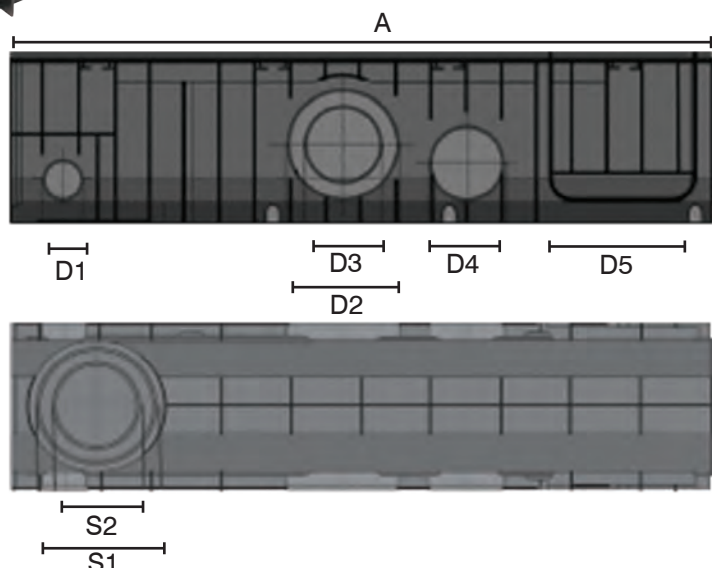
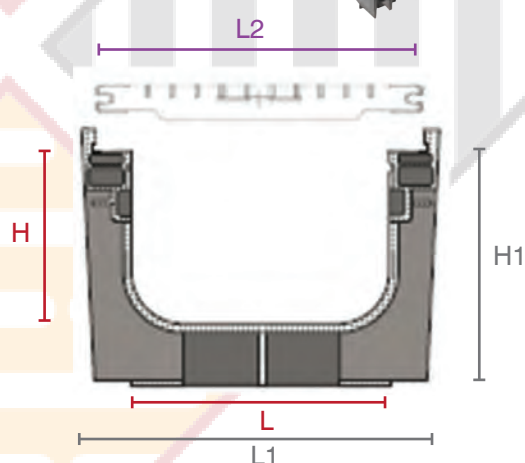
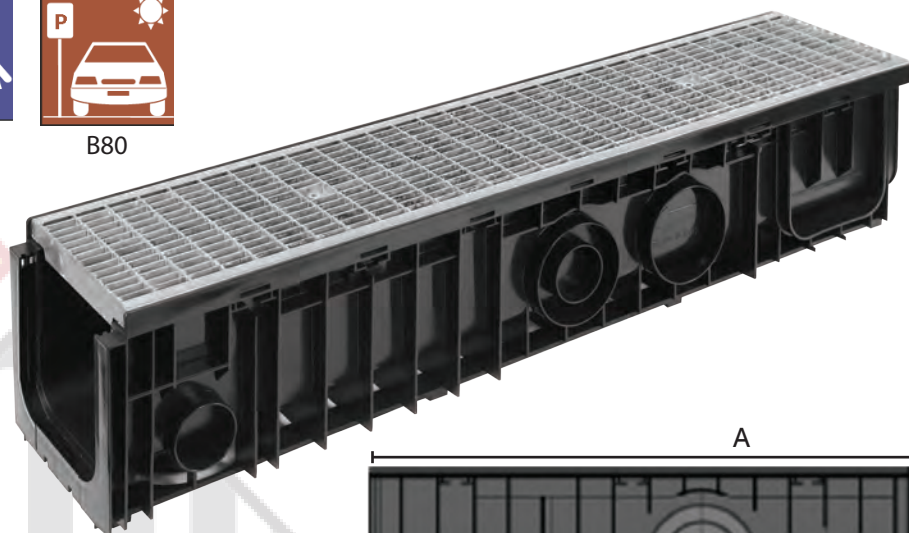
RESIDENTIAL



A10



B80



### SABDRAIN 601

CODE	L	H	L1	H1	L2	Drain cm <sup>2</sup>	D1	D2	D3	D4	D5	S1	S2	A	Kg
DR601100100	100	100	150	150	145	800	63	90	63	90	100	110	63	1000	6.4
DR601100150	100	150	150	200	145	800	63	90	63	90	100	110	63	1000	6.9
DR601150150	150	150	200	200	195	1241	63	110	63	110	150	110	63	1000	9.0
DR601200100	200	100	250	150	245	1485	63	90	110	110	200	160	110	1000	12.0
DR601200150	200	150	250	200	245	1485	63	110	63	110	200	160	110	1000	12.5
DR601200200	200	200	250	250	245	1485	63	160	110	110	200	160	110	1000	13.1
DR601200250	200	250	250	300	245	1485	63	160	110	110	200	160	110	1000	13.55
DR601200300	200	300	250	350	245	1485	63	160	110	110	200	160	110	1000	14.0

## 704 CAST IRON GRATED CHANNEL

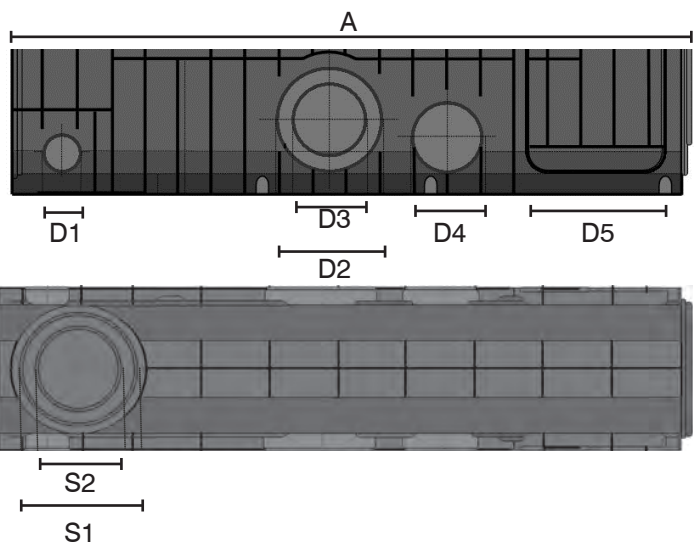
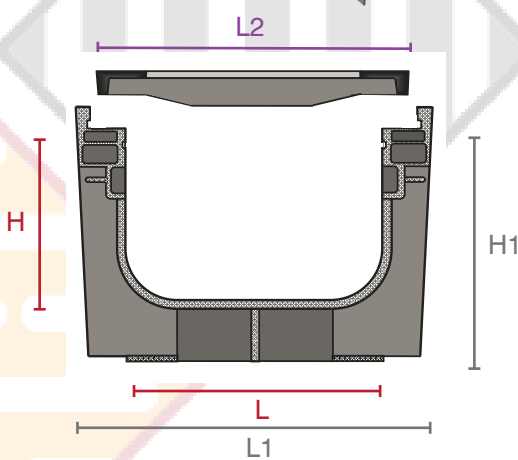
SABdrain 704 provides the ultimate desirability for design and functionality of any drainage channel available to the civil construction market. From its lightweight channel unit to the high strength cast iron grate, the flexibility and durability of this product is able to satisfy the most demanding requirements placed upon it. This rated channel and grate has been designed for situations that require accessibility for heavy commercial vehicles as well as being able to cater for the needs of highway use. Each grate is equipped with an '8 point' security fixing system, to keep it rattle free from vehicular movements and secure it from unauthorised access.



C150



D210



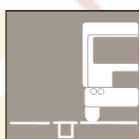
### SABDRAIN 704

CODE	L	H	L1	H1	L2	Drain cm <sup>2</sup>	D1	D2	D3	D4	D5	S1	S2	A	Kg
DR704100100	100	100	150	150	146	220	63	90	63	63	100	110	63	1000	10.3
DR704100150	100	150	150	200	146	220	63	110	63	110	100	110	63	1000	10.8
DR704150150	150	150	200	200	197	348	63	110	63	110	150	110	63	1000	15.3
DR704200100	200	100	250	150	247	494	63	90	63	63	200	160	110	1000	18.6
DR704200150	200	150	250	200	247	494	63	110	63	90	200	160	110	1000	19.1
DR704200200	200	200	250	250	247	494	63	160	110	90	200	160	110	1000	19.7
DR704200250	200	250	250	300	247	494	63	160	110	90	200	160	110	1000	20.2
DR704200300	200	300	250	350	247	494	63	160	110	90	200	160	110	1000	20.6



## 704 300 CAST IRON GRATED CHANNEL

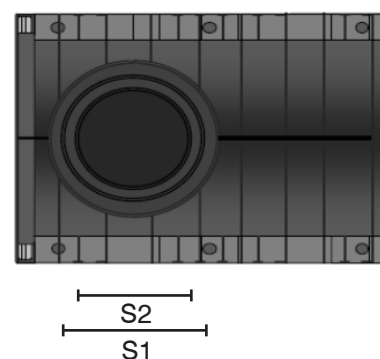
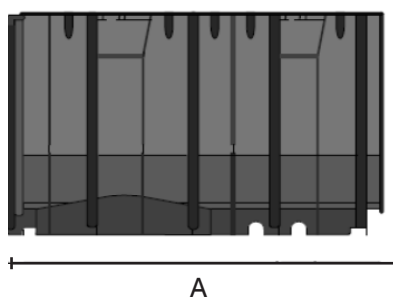
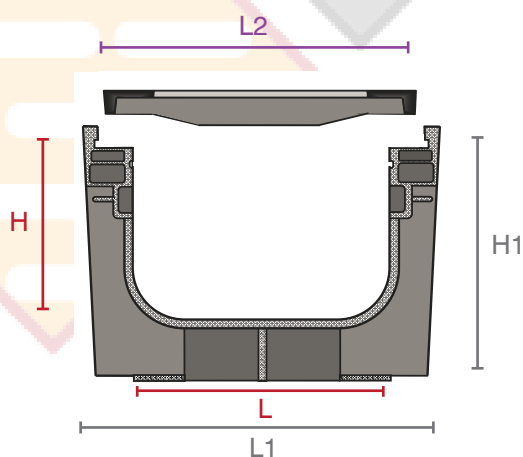
SABdrain 704 300 is the largest of the channel and grate unit available for the ever increasing needs of the drainage market. While still being able to meet what is necessary to comply with the design requirements of Class C - G Ratings, this channel is able to deliver the performance required of it. Each grate is equipped with a '4 point' security fixing system to secure it from unauthorised access, and keep it rattle free from vehicular movements, as well as steel side edging to give higher resistance to heavy loads.



C150



D210



### SABDRAIN 704 300

CODE	L	H	L1	H1	L2	Drain cm <sup>2</sup>	D1	D2	D3	D4	D5	S1	S2	A	Kg
DR704300200	300	200	390	260	376	704	-	-	-	-	-	200	160	500	20.6
DR704300300	300	300	390	360	376	704	-	-	-	-	-	200	160	500	21.3

## 706 HEAVY DUTY CAST IRON GRATED CHANNEL

SABdrain 706 Heavy Duty Cast Iron Grated Channel comes with steel support edging to guarantee higher performance for heavy loads and high traffic in Class E to Class G applications. The high strength cast iron grate is equipped with an 8 point security fixing system to keep it rattle free from vehicular movements and secure from unauthorised access. The flexibility and durability of this product is able to satisfy the most demanding requirements placed upon it.



D210



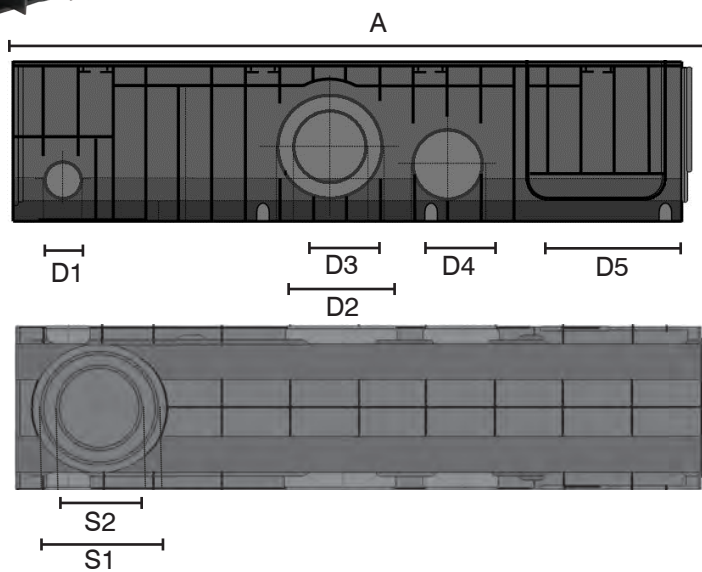
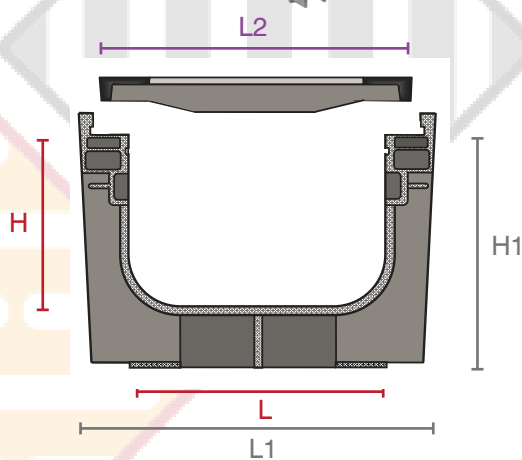
E400



F600



G900



### SABDRAIN 706 HEAVY DUTY

CODE	L	H	L1	H1	L2	Drain cm <sup>2</sup>	D1	D2	D3	D4	D5	S1	S2	A	Kg
DR706100100	100	100	150	150	146	220	63	90	63	63	100	110	63	1000	17
DR706100150	100	150	150	200	146	220	63	110	63	110	100	110	63	1000	17.5
DR706150150	150	150	200	200	197	348	63	110	63	110	150	110	63	1000	23.9
DR706200100	200	100	250	150	247	476	63	90	63	63	200	160	110	1000	29.8
DR706200150	200	150	250	200	247	476	63	110	63	110	200	160	110	1000	30.3
DR706200200	200	200	250	250	247	476	63	160	110	110	200	160	110	1000	30.8
DR706200250	200	250	250	300	247	476	63	160	110	110	200	160	110	1000	31.2
DR706200300	200	300	250	350	247	476	63	160	110	110	200	160	110	1000	31.6

## 706 300 HEAVY DUTY CAST IRON GRATED CHANNEL

SABdrain 706 300 is the largest of the channel and grate unit available for the ever increasing needs of the drainage market. While still being able to meet what is necessary to comply with the design requirements of Class E - G Ratings, this channel is able to deliver the performance required of it. Each grate is equipped with a '4 point' security fixing system to secure it from unauthorised access, and keep it rattle free from vehicular movements, as well as steel side edging to give higher resistance to heavy loads.



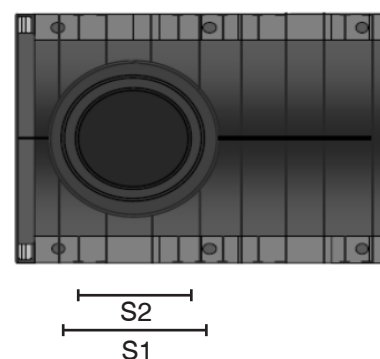
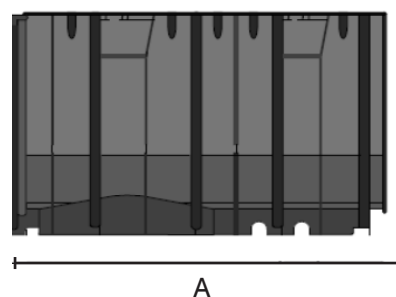
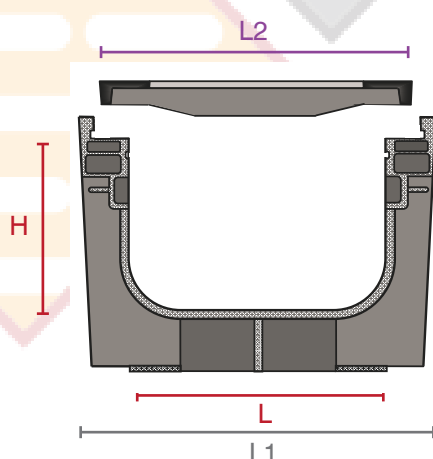
E400



F600



G900



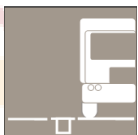
### SABDRAIN 706 300 HEAVY DUTY

CODE	L	H	L1	H1	L2	Drain cm <sup>2</sup>	D1	D2	D3	D4	D5	S1	S2	A	Kg
DR706300200	300	200	390	260	376	704	-	-	-	-	-	200	160	500	23.3
DR706300300	300	300	390	360	376	704	-	-	-	-	-	200	160	500	24.0



## 707 CAST IRON HEEL GUARD GRATED CHANNEL

SABdrain 707 provides the ultimate desirability for design and functionality of any drainage channel available to the civil construction market. From its lightweight channel unit to the high strength cast iron grate, the flexibility and durability of this product is able to satisfy the most demanding requirements placed upon it. This rated channel and grate has been designed for situations that require accessibility for heavy commercial vehicles as well as being able to cater for the needs of highway use. Each grate is equipped with an '8 point' security fixing system, to keep it rattle free from vehicular movements and secure it from unauthorised access.



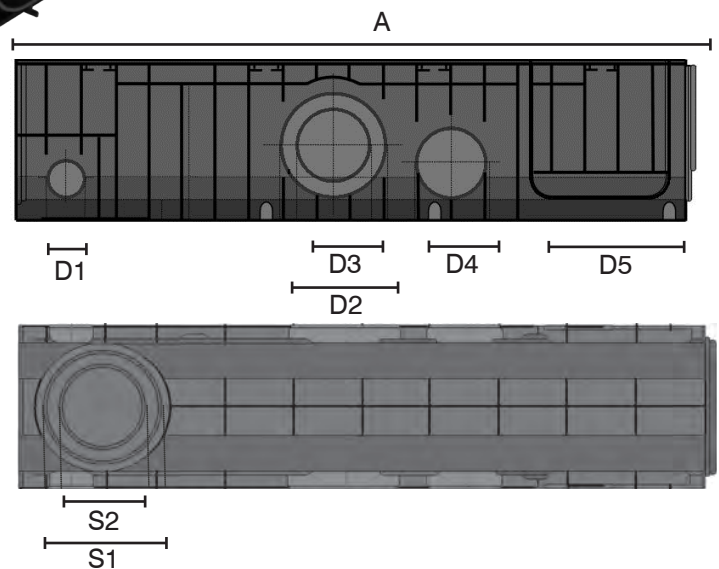
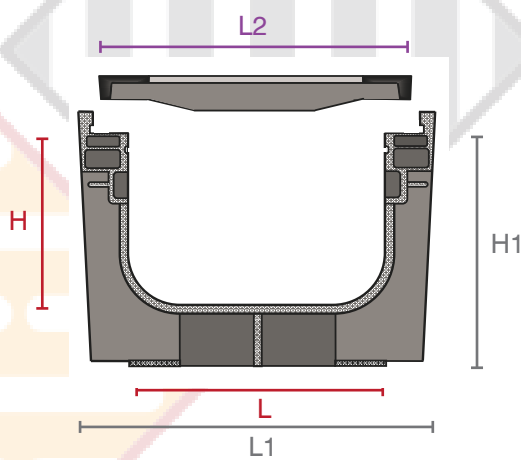
C150



D210



Heel Guard



### SABDRAIN 707

CODE	L	H	L1	H1	L2	Drain cm <sup>2</sup>	D1	D2	D3	D4	D5	S1	S2	A	Kg
DR707100100	100	100	150	150	146	88	63	90	63	90	100	110	63	1000	10.3
DR707100150	100	150	150	200	146	88	636	90	63	90	100	110	63	1000	10.8
DR707150150	150	150	200	200	197	146	63	110	63	110	150	110	63	1000	15.3
DR707200100	200	100	250	150	247	205	63	90	63	63	200	160	110	1000	18.6
DR707200150	200	150	250	200	247	205	63	110	63	110	200	160	110	1000	19.1
DR707200200	200	200	250	250	247	205	63	160	110	110	200	160	110	1000	19.7
DR707200250	200	250	250	300	247	205	63	160	110	110	200	160	110	1000	20.2
DR707200300	200	300	250	350	247	205	63	160	110	110	200	160	110	1000	20.6

## 707 300 CAST IRON HEEL GUARD GRATED CHANNEL

SABdrain 707 300 is the largest of the channel and grate unit available for the ever increasing needs of the drainage market. While still being able to meet what is necessary to comply with the design requirements of Class C - G Ratings, this channel is able to deliver the performance required of it. Each grate is equipped with a '4 point' security fixing system to secure it from unauthorised access, and keep it rattle free from vehicular movements, as well as steel side edging to give higher resistance to heavy loads.



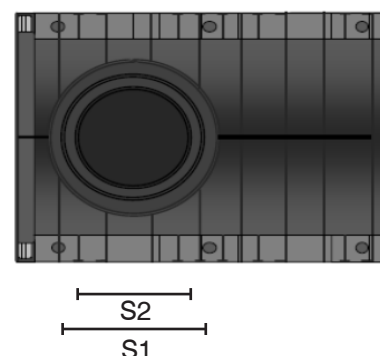
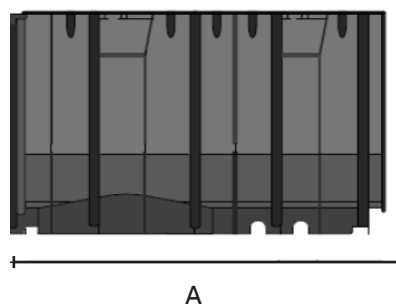
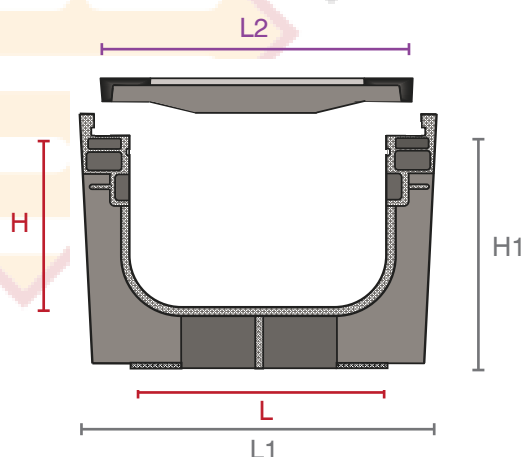
C150



D210



Heel Guard



### SABDRAIN 707 300

CODE	L	H	L1	H1	L2	Drain cm <sup>2</sup>	D1	D2	D3	D4	D5	S1	S2	A	Kg
DR707300200	300	200	390	260	376	322	-	-	-	-	-	200	160	500	20.6
DR707300300	300	300	390	360	376	322	-	-	-	-	-	200	160	500	21.3

## SAB900 - ELITE STAINLESS STEEL WEDGEWIRE DRAINAGE CHANNEL

SAB900 Elite Range has been developed for the high end architectural market incorporating a 304 Stainless Steel Wedge wire "Heel Guard" type Grate design that is both stylish and appealing while still being able to meet the requirements of the industry. This rated polypropylene channel offers the maximum versatility while delivering a lifetime of low maintenance.

### 901 S/S ELITE PLAIN WIRE GRATED CHANNEL



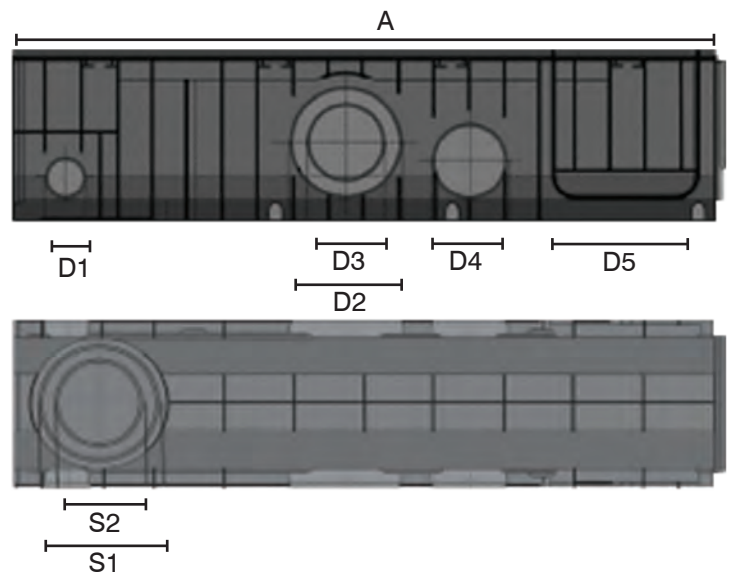
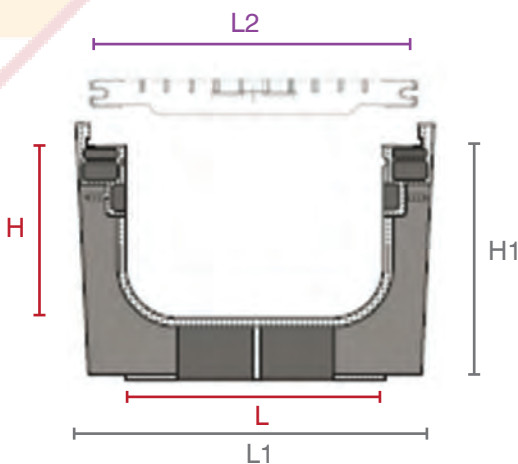
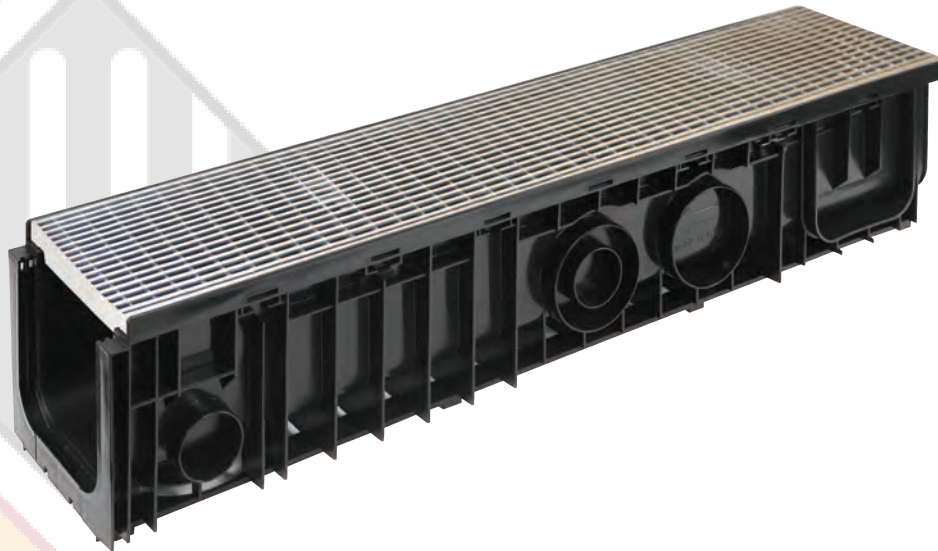
RESIDENTIAL



A10



Heel Guard





## 902 S/S ELITE ANTISLIP GRATES CHANNEL

SABdrain 902 Elite has a 304 Stainless Steel Wedge wire Heel Guard grate with Anti-slip buttons giving a slip resistance surface.



RESIDENTIAL



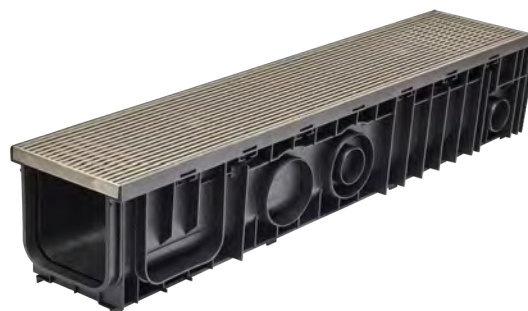
A10



ANTISLIP



Heel Guard



## 903 S/S ELITE LOCKDOWN GRATED CHANNEL

SABdrain 903 Elite has 304 Stainless Steel Wedge wire Heel Guard grate with 2 point security lockdown for Anti-Theft peace of mind.



RESIDENTIAL



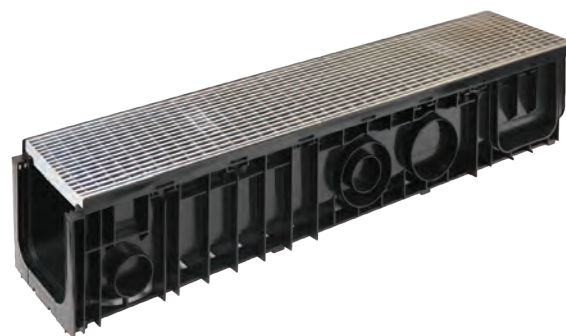
A10



LOCKDOWN



Heel Guard



## 904 S/S ELITE ANTISLIP LOCKDOWN GRATED CHANNEL

SABdrain 904 Elite has 304 Stainless Steel Wedge wire Heel Guard grate with Anti-Slip Buttons & 2 points security lockdown for Anti-Theft.



RESIDENTIAL



A10



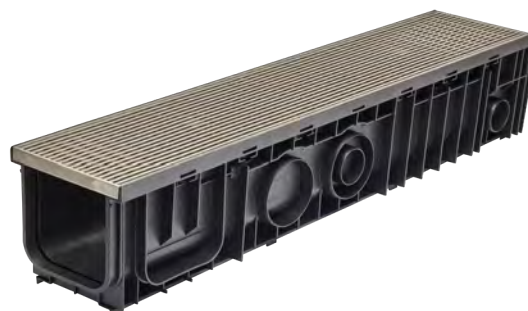
LOCKDOWN



ANTISLIP



Heel Guard



### SABDRAIN 901, 902, 903, 904

CODE	L	H	L1	H1	L2	Drain cm	D1	D2	D3	D4	D5	S1	S2	A	Kg
DR901100100	100	100	150	150	145	837	63	90	63	90	100	110	63	1000	7.5
DR901100150	100	150	150	200	145	837	63	90	63	90	100	110	63	1000	7.9
DR901150150	150	150	200	200	195	1139	63	110	63	110	150	110	63	1000	9.8
DR901200100	200	100	250	150	245	1674	63	90	110	110	200	160	110	1000	10.6
DR901200150	200	150	250	200	245	1674	63	110	63	110	200	160	110	1000	11.1
DR901200200	200	200	250	250	245	1674	63	160	110	110	200	160	110	1000	11.6
DR901200250	200	250	250	300	245	1674	63	160	110	110	200	160	110	1000	12.1
DR901200300	200	300	250	350	245	1674	63	160	110	110	200	160	110	1000	12.6

# GRATES



## 351 GRATE

CODE	SIZE	MATERIAL
DR351GRATE100	145mm x 500mm	Polypropylene



RESIDENTIAL



CLASS A



## 507 GRATE

CODE	SIZE	MATERIAL
DR507GRATE100	145mm x 1000mm	Galvanised Steel
DR507GRATESS100	145mm x 1000mm	Stainless Steel



RESIDENTIAL



CLASS A



## 601 GRATE

CODE	SIZE	MATERIAL
DR601GRATE100	145mm x 1000mm	Galvanised Steel
DR601GRATE150	195mm x 1000mm	Galvanised Steel
DR601GRATE200	245mm x 1000mm	Galvanised Steel



RESIDENTIAL



CLASS A



CLASS B



LOCKDOWN



## 704 GRATE

CODE	SIZE	MATERIAL
DR704GRATE100	147mm x 500mm	Cast Iron
DR704GRATE150	197mm x 500mm	Cast Iron
DR704GRATE200	247mm x 500mm	Cast Iron
DR704GRATE300	376mm x 500mm	Cast Iron



CLASS C



CLASS D



ANTISLIP



LOCKDOWN



## 706 HEAVY DUTY GRATE

CODE	SIZE	MATERIAL
DR706GRATE100	147mm x 500mm	Cast Iron
DR706GRATE150	197mm x 500mm	Cast Iron
DR706GRATE200	247mm x 500mm	Cast Iron
DR706GRATE300	376mm x 500mm	Cast Iron



CLASS E



CLASS F



CLASS G



ANTISLIP



LOCKDOWN

# GRATES



## 707 GRATE

CODE	SIZE	MATERIAL
DR707GRATE100	145mm x 500mm	Cast Iron
DR707GRATE150	195mm x 500mm	Cast Iron
DR707GRATE200	245mm x 500mm	Cast Iron
DR707GRATE300	376mm x 500mm	Cast Iron



CLASS C



CLASS D



HEEL GUARD



LOCKDOWN



## 901 WEDGEWIRE GRATE

CODE	SIZE	MATERIAL
DR901GRATE100	145mm x 1000mm	Stainless Steel
DR901GRATE150	195mm x 1000mm	Stainless Steel



RESIDENTIAL



CLASS A



HEEL GUARD



## 902 WEDGEWIRE ANTISLIP GRATE

CODE	SIZE	MATERIAL
DR902GRATE100	145mm x 1000mm	Stainless Steel
DR902GRATE150	195mm x 1000mm	Stainless Steel



RESIDENTIAL



CLASS A



ANTISLIP



HEEL GUARD



## 903 WEDGEWIRE LOCKDOWN GRATE

CODE	SIZE	MATERIAL
DR903GRATE100	145mm x 1000mm	Stainless Steel
DR903GRATE150	195mm x 1000mm	Stainless Steel



RESIDENTIAL



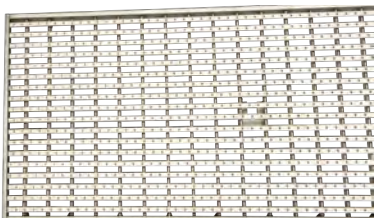
CLASS A



LOCKDOWN



HEEL GUARD



## 904 WEDGEWIRE ANTISLIP LOCKDOWN GRATE

CODE	SIZE	MATERIAL
DR904GRATE100	145mm x 1000mm	Stainless Steel
DR904GRATE150	195mm x 1000mm	Stainless Steel



RESIDENTIAL



CLASS A



LOCKDOWN



ANTISLIP



HEEL GUARD



## CHANNEL ACCESSORIES

### END CAP OFFTAKE COMBO



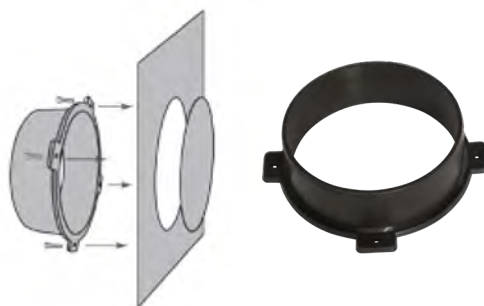
#### END OUTLETS

CODE	OUTLET
DREC100COMBO	90mm
DREC150COMBO	100mm

### END CAPS

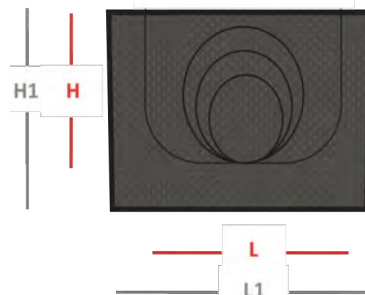


### SPRIGOT OFFTAKE



#### SPRIGOT OFFTAKE

CODE	L
DRSO90	90mm
DRSO100	100mm
DRSO150	150mm



#### END CAPS

CODE	L	H	L1	H1
DREC10050	100	50	150	80
DREC100100	100	100	150	130
DREC150150	150	150	200	180
DREC200150	200	150	250	180
DREC200200	200	200	250	230
DREC200300	200	300	250	330
DREC300200	300	200	390	240
DREC300300	300	300	390	330
DREC508100	100	100	125	117

## INSTALL CLIP

The Install-Clip is designed to support and clip two channels together. With a concept of one clip to fit all channels a fancy new design from Italy, this clip can be flipped to meet the requirements and sizes from the SAB500, SAB600, SAB700 & the 900 series.



### INSTALL CLIPS

CODE	SIZE
DRINSTALL	100 - 150 - 200 - 300

## DRAIN BOX

SABdrain DRAINBOX has been developed to be used in conjunction with the Sabdrain 704 cast iron grate range. By providing an inline pit along with the drainage system it has the advantages of increasing the head of water for outlet capacity while still providing aesthetics of linear design.



A10



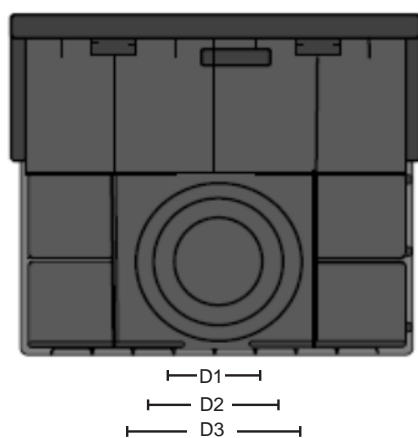
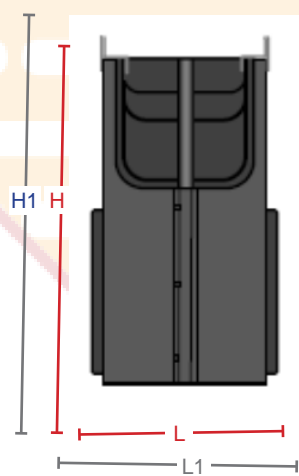
B80



C150



D210



### DRAINBOX

CODE	L	H	L1	H1	D1	D2	D3	A	Kg
DRAINBX150	150	400	200	430	100	160	200	500	10.4
DRAINBX200	200	400	250	430	100	160	200	500	12.5

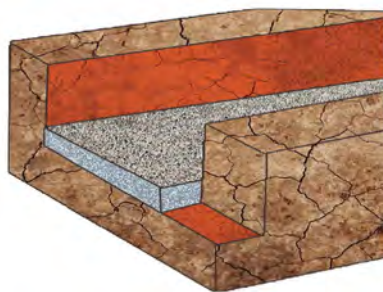
## INSTALLATION & ASSEMBLY OF CHANNELS



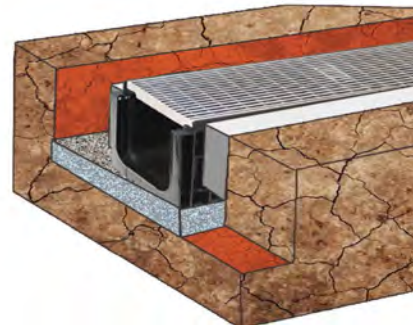
SABdrain drainage systems uses an M type channel and thus requires the strengthening of concrete to support loads of vertical and horizontal thrust. In creating a concrete haunch to lock the channel, it enables it to meet the required load rating as specified in AS4058 - 2006.



1: Excavation Design: the size of the trench will need to take into account the dimension and rating of the channel in determining the depth and width of the trench (See Table). The trench should be excavated from the lowest point of discharge to the highest point. The base should be compacted well particularly if the ground is soft.



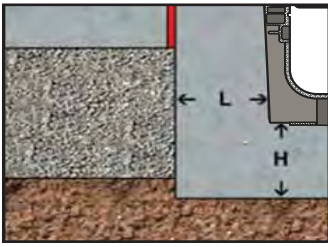
2: Concrete Base: lay the concrete base to the recommended thickness as specified in table 2.10 using a minimum strength of 20 MPA. Allow enough gradient in the base for water drainage.



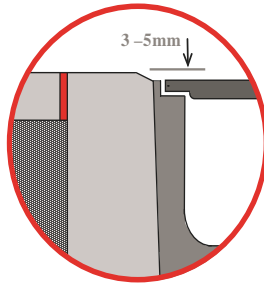
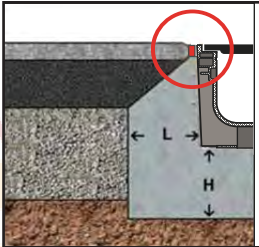
3: Channel Installation: assemble the channels including fixing the grates to the channels and position inside the trench starting from the lowest point of discharge ensuring that each channel unit is locked securely together and aligned. Place concrete along the sides of the channel making sure that it worked into the ribbing along the base as well as sides paying particular to the grate support edge.



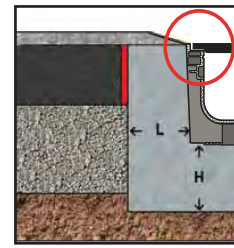
## Concrete



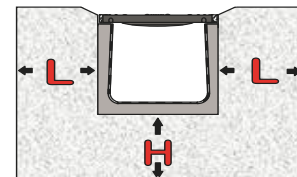
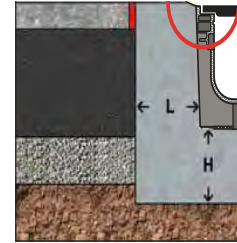
## Asphalt – Load up to Class C



## Draining Asphalt



## Asphalt – Loads from Class D



# Dimensions of Concrete Support

## DIMENSIONS

Load Class		Class A	Class B	Class C	Class D	Class E	Class F	Class G
Concrete bed size	H	100mm	100mm	150mm	150mm	200mm	200mm	200mm
Concrete lateral backfill size	L	100mm	100mm	150mm	150mm	200mm	200mm	200mm

**Note: We highly recommend vibrating and compacting of the concrete.**

**Engineering advice is advised**

## ASSEMBLY OF THE CHANNELS

1: Assemble the channels together for the length desired. Every channel must be inserted into the next one all the way until the lip snaps into place (fig. 1)

2: Insert the metal reinforcing rails (for models that have it) with the upper edges facing up (fig. 2)

3: Assemble the grids (fig.3)

4: Screw and tighten the screws and anchors (fig.4 5 6), widen the anchors to an inclination of 45° to the channel (fig. 7 &8)

Fig.1

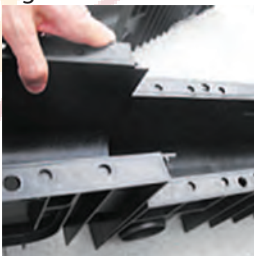


Fig.2



Fig.3



Fig.4



Fig.5



Fig.6



Fig.7



Fig.8







**SABdrain**  
water drainage systems

SabDrain Australasia  
Phone: 1300 475 169  
Email : [info@sabdrain.com.au](mailto:info@sabdrain.com.au)  
Web: [www.sabdrain.com.au](http://www.sabdrain.com.au)

